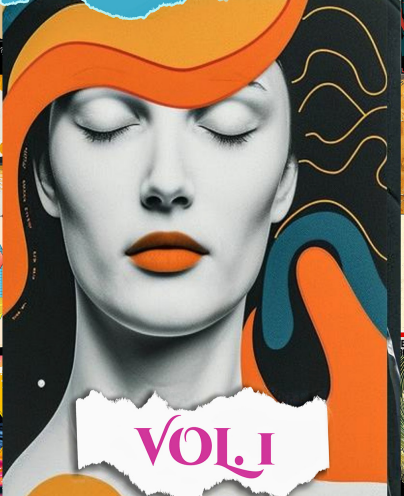




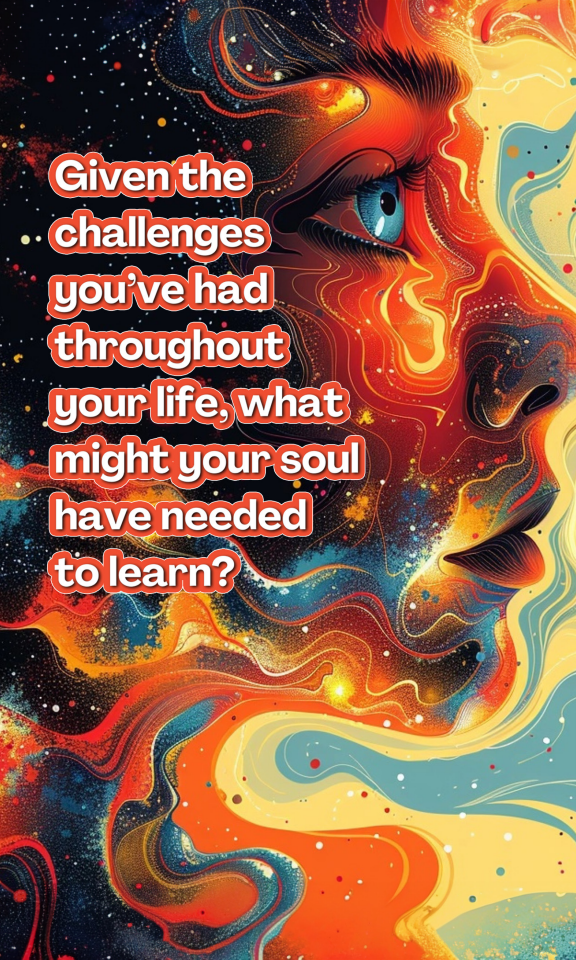
DAVID PARIS

QUESTIONS



VOL. I





**Given the
challenges
you've had
throughout
your life, what
might your soul
have needed
to learn?**



WHOSE

SHOULDERS

DO YOU

STAND ON?



WHEN WERE YOU SURPRISED THAT THE GRASS
WASN'T GREENER ON THE OTHER SIDE?



A vertical image featuring a single red rose with dark green leaves and thorns. The rose is positioned in the upper half of the frame. Below the stem, a network of dark, gnarled roots is visible, extending across the bottom of the image. The background is a textured, yellowish-gold surface with a grid-like pattern, resembling aged paper or a wall with peeling paint. The overall mood is contemplative and somewhat somber.

WHAT IS THE SOURCE OF
YOUR HAPPINESS?

What is the root of
your pain?



**What are you driven to do?
What are the roots of that
drive?**

**What is the relationship
between your drive and
self-worth?**

what evolutionary

WIRING...



A) HAS BEEN USEFUL TO YOU IN YOUR LIFE?

B) HAS NOT BEEN USEFUL TO YOU IN YOUR LIFE?

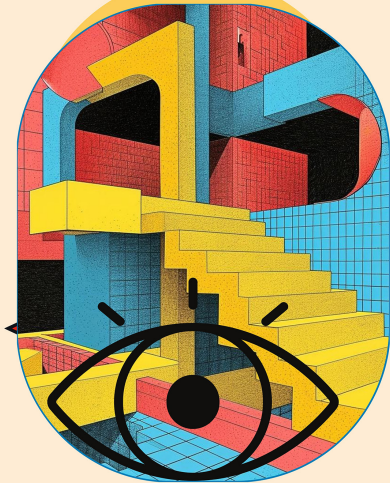
***What ripple effect
impacted you?***



How have you had a
ripple effect on others?



*What have you
rediscovered through the
eyes of a child?*



What challenging personality traits did you inherit from your family?

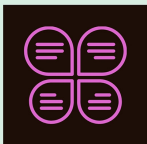
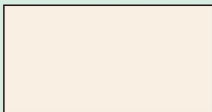


What beneficial personality traits did you inherit from your family?

What have you become wise about?



What wisdom has eluded you?



When something bothers you, which one of your values is not being met?

